

Performance Comparison

Supplemental Material 3

Chia-Kai Liang, Tai-Hsu Lin, Bing-Yi Wong,
Chi Liu, Homer H. Chen

National Taiwan University

Setup

- These are the enlarged images of Figures 1 and 8 in the paper.
- Raw image size: 640 x 424.
- A total of 16 light field images in the dataset.
- We implement a well-known graph-cut stereo matching algorithm [Boykov et al. 2001] for comparison.
- We apply the Photoshop Lens Blur tool to a single light field image and its depth map to generate a defocused image.

An Input Image



Depth Estimation without Photometric Calibration and Occlusion Reasoning



Depth Estimation without Occlusion Reasoning

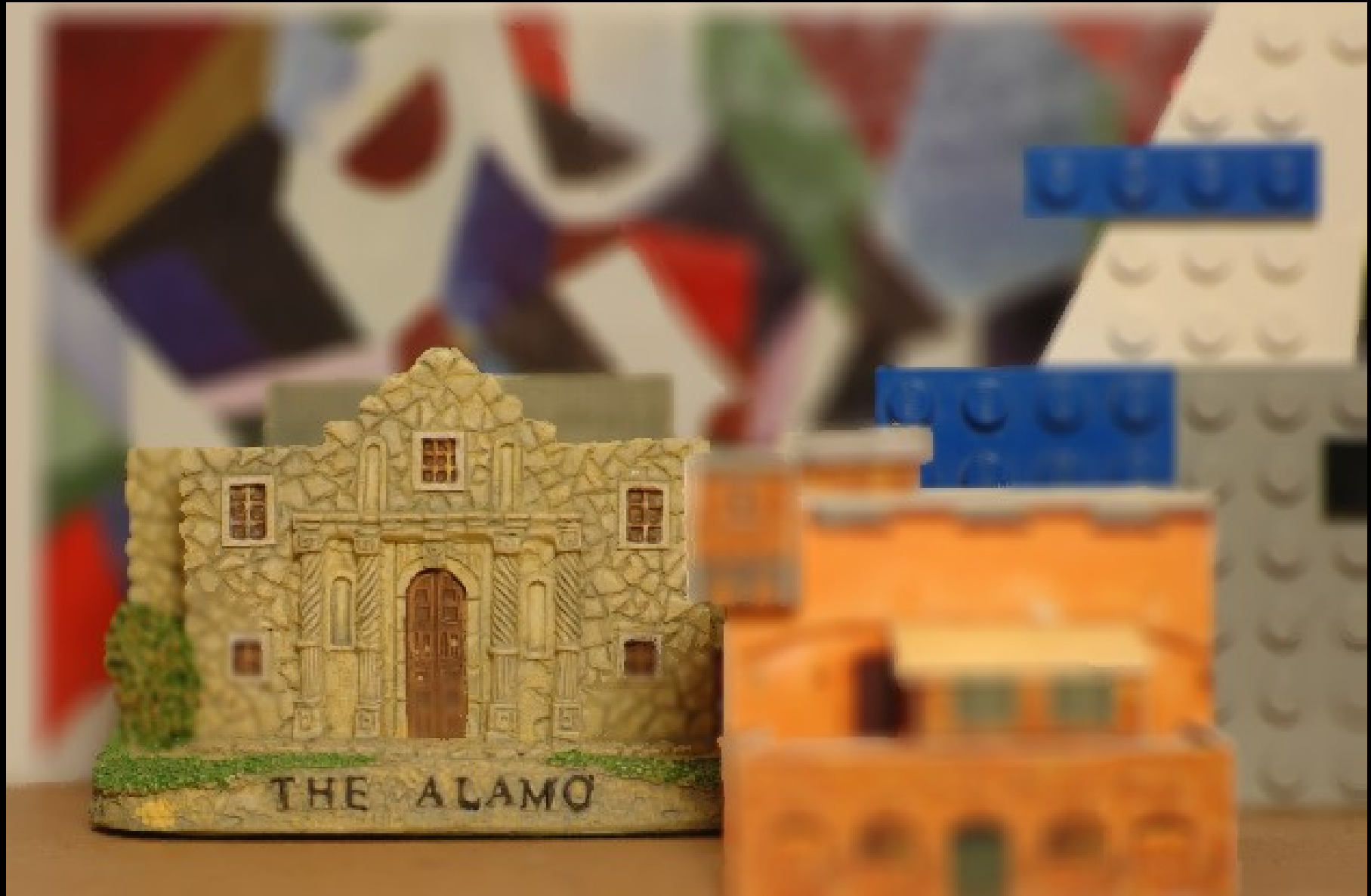


Proposed Algorithm



Blank Page

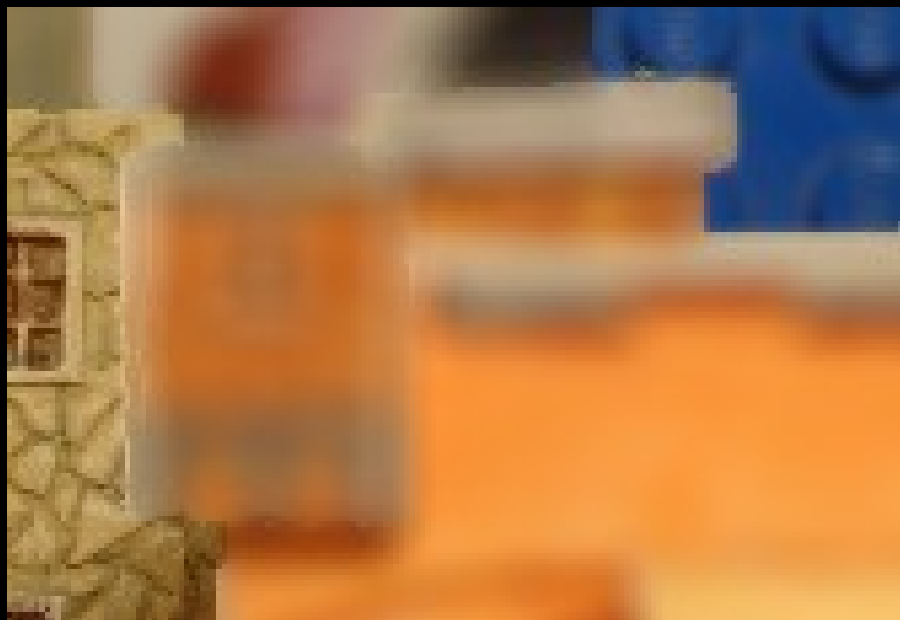
Refocused Image using Photoshop Lens Blur Tool



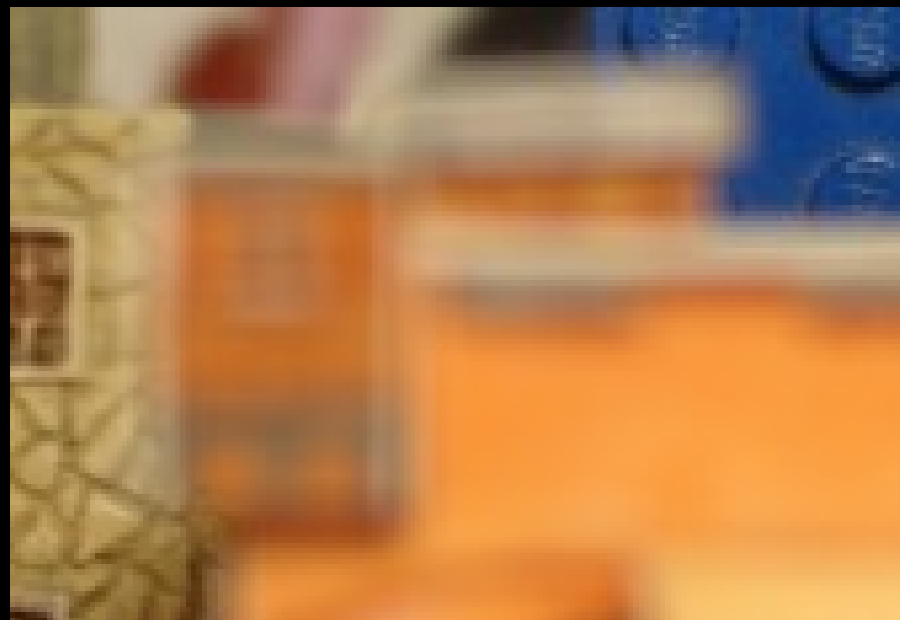
Our Refocused Image



Comparison



Photoshop Lens Blur Tool



Our Algorithm